

## Static solder bath

Static solder baths are used for tinning or degolding components leads and wires. Some baths can even be equipped with a manual pantograph for tinning or degolding components in series.  
All our products are compliant with lead-free alloys.

### PE500 Static solder pot

The solder pot PE500 is suitable for tinning or degolding series parts and wires.

- ✓ Cast-iron crucible, cylindrical high load resistor.
- ✓ Mandatory use with an RP500 power regulator to adjust the temperature.

Ref.1010001077

Technical data	
Mains supply	230 V / 50-60 Hz
Power	500 W
Solder capacity	1,3 kg
Net weight	6,1 kg
Crucible dimensions	Ø 60 mm Depth = 60 mm
L x W x H mm	140 x 140 x 140



RP500

### PE600NAD Thermoregulated static soldering pot

- ✓ Suitable for tinning or soldering wire and component connections (manually).
- ✓ Cast-iron crucible, cylindrical high load resistor.
- ✓ Type J thermocouple.



Technical data	
Mains supply	230 V / 50-60 Hz
Power	600 W
Solder capacity	1,3 kg
Crucible dimensions	Ø 60 mm Depth = 60 mm
L x W x H mm	300 x 140 x 140
Net weight	7,4 kg
PID regulator: from 0° to 600°C with adjustable setpoint	

### BE600N Thermoregulated static soldering bath

- ✓ Control of the alloy level (supplied with a squeegee)
- ✓ Adjustable temperature
- ✓ Cast-iron crucible, cylindrical high load resistor
- ✓ Type J thermocouple

Technical data	
Mains supply	230 V / 50-60 Hz
Power	1600 W
Solder capacity	6 kg
Crucible dimensions	150 x 100 x 55 mm
L x W x H mm	480 x 280 x 155
Net weight	12 kg
PID regulator: from 0° to 600°C with adjustable setpoint	



### BE300x50 Thermoregulated static soldering bath

- ✓ Can be equipped with a manual pantograph or an automatic tinning machine (TP60P).
- ✓ Control of the alloy level.
- ✓ Cast-iron crucible, cylindrical high load resistor G110.
- ✓ Type J thermocouple.



Technical data	
Mains supply	230 V / 50-60 Hz
Power	1600 W
Solder capacity	5 kg
Crucible dimensions	300 x 50 x 45 mm
L x W x H mm	640 x 200 x 150
Net weight	16 kg
PID adjustment: from 0° to 600°C with adjustable setpoint	

### Double crucible bath 300x50

Double crucible bath 300x50 for simultaneous degolding and tinning



## Pantograph for tin bath

Our baths BE300X50 and BE 300X50D are pre-equipped to receive a manual pantograph.

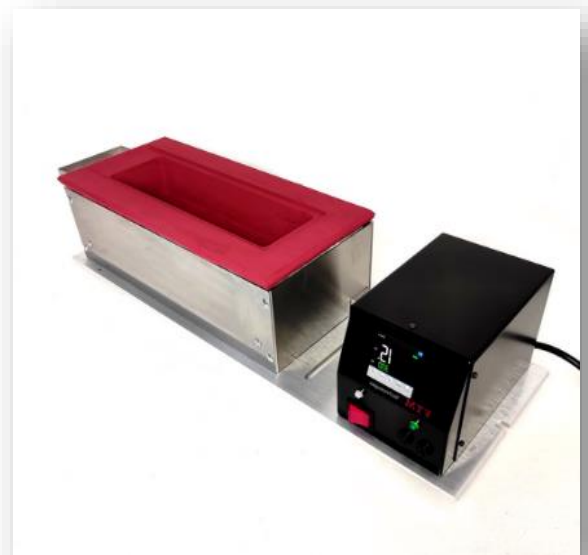
- ✓ Facilitation of tinning operation.
- ✓ Repeatability.
- ✓ Better security for operators.
- ✓ Compatible with TP60P and TP90P tinning machines.



## BE300x90 Thermoregulated static soldering bath

- ✓ Can be equipped with a manual pantograph or an automatic tinning machine (TP60P).
- ✓ Control of the alloy level.
- ✓ Cast-iron crucible, cylindrical high load resistor.
- ✓ Type J thermocouple.

Technical data	
Mains supply	230 V / 50-60 Hz
Power	1600 W
Solder capacity	11 kg
Crucible dimensions	300 x 90 x 45 mm
L x W x H mm	640 x 200 x 150
Net weight	21 kg
PID regulator: from 0° to 600°C with adjustable setpoint	



## Custom made soldering bath

Tell us about the characteristics of your application (use, operating temperature) and the desired dimensions, we will make you the most suitable proposal.

Crucible made of titanium (grade according to temperature requirement). Stainless steel body. Control box with dual display.



150X150X150



Narrow and deep bath



Round mobile pot



200X200X200



250X150X50



450X450X450



120X20X100