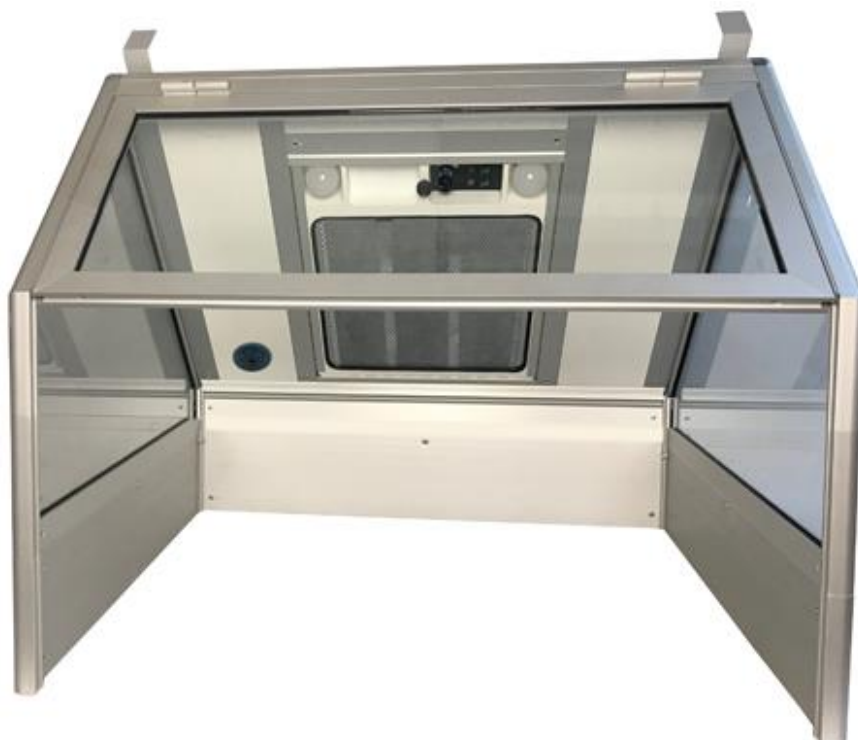


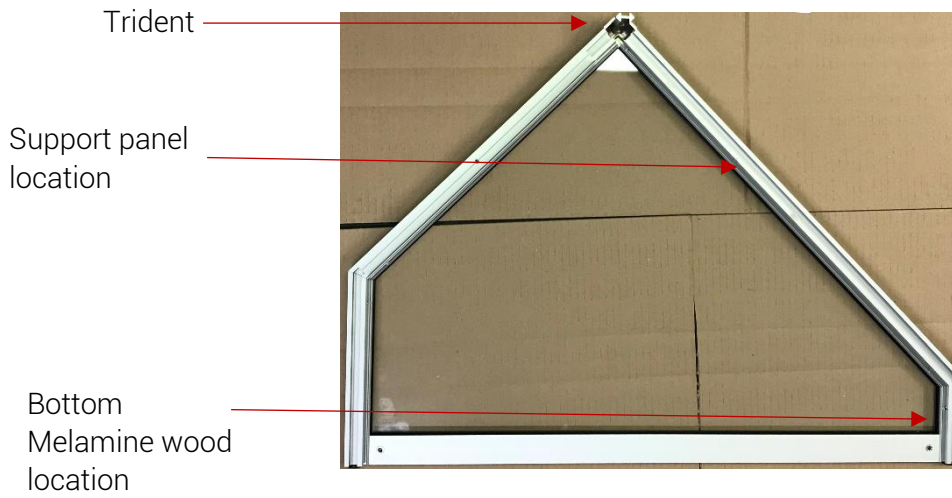
# ASSEMBLY MANUAL

## HI7VP - HI7VPR FUME HOODS

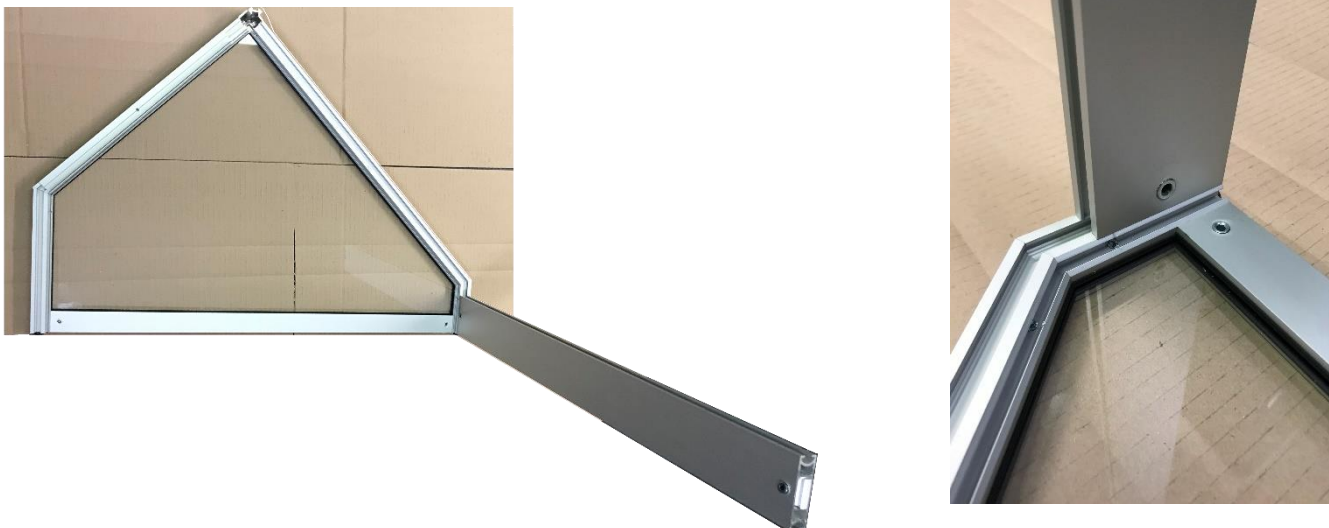


*Assembly in 8 steps:*

1. Lay **one side of the cabin** on the floor, protected by a cardboard or on a suitable work surface



2. Lay the bottom melamine wood of the cabin on the short side, screw



3. **Slide the support panel**, insert it on the tripod on the side of the cab panel



4. **Screw** to secure the bottom panel of the cab to the side panel



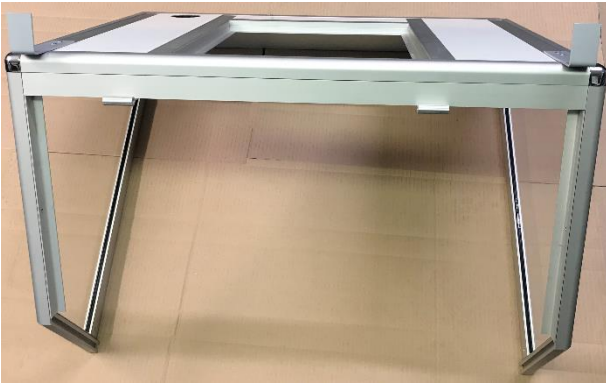
5. **Insert the top profile** of the cab onto the side panel, secure it with the screw.



6. Put and secure the **second side** of the cab.



7. If necessary, adjust the hinges, and insert the studs.



8. Finally, gently slide the door into the studs.

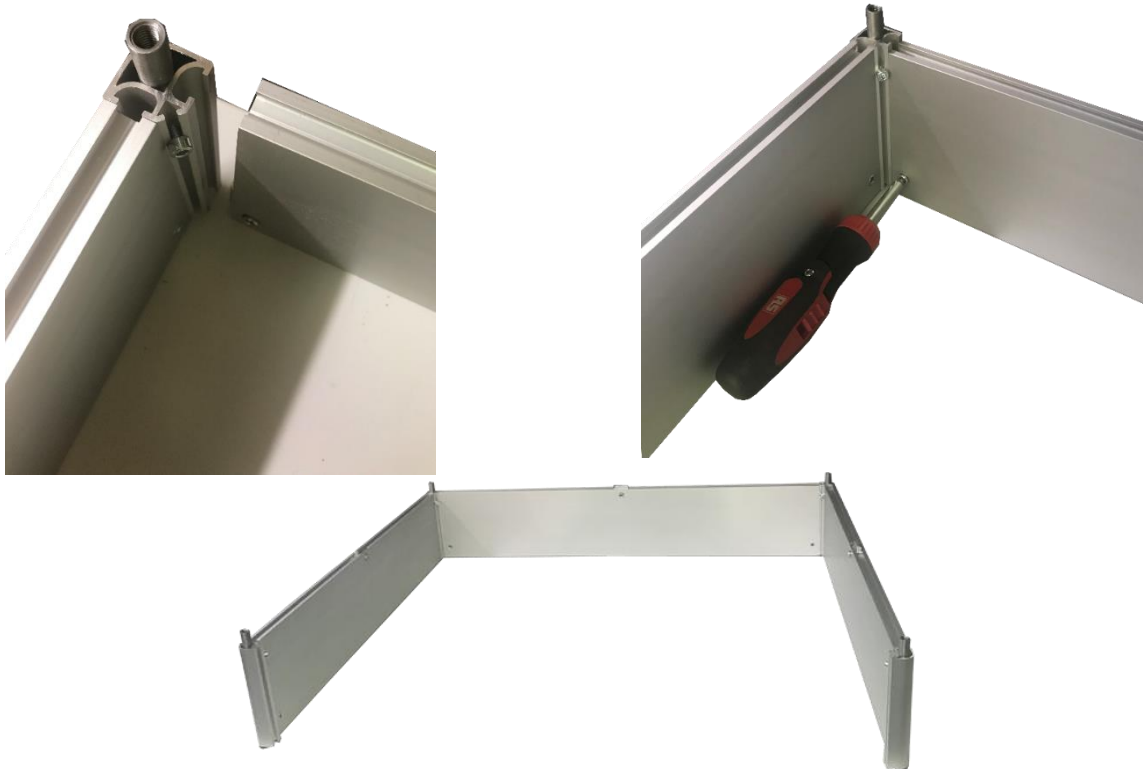


For HI7VPR follow the instructions below to install the extension

1. Clip the four anti-slip in the corners of the extension

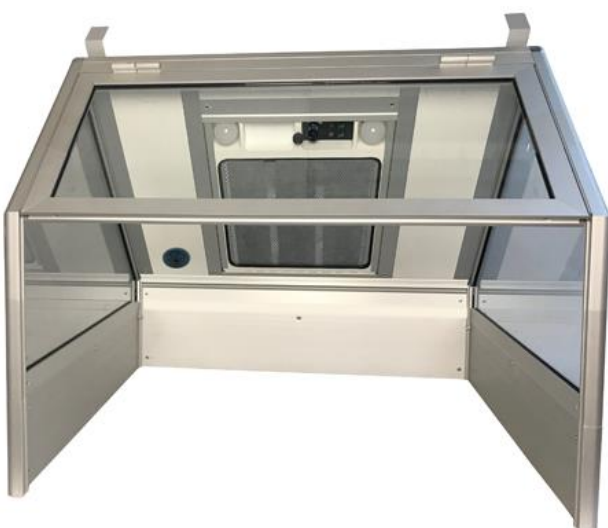


2. Connect the 2 side sections to the main section, screw



3. Put the cabin gently on the extension

4. Fix the 3 screws of the extension to fix the whole



Contact us for any questions

**FTM Technologies SEM**

78, rue Raymond Poincaré  
92000 Nanterre, FRANCE

[info@ftm-technologies.com](mailto:info@ftm-technologies.com)

Tél : + 33 1 40 86 00 09

Fax : + 33 1 40 86 16 45

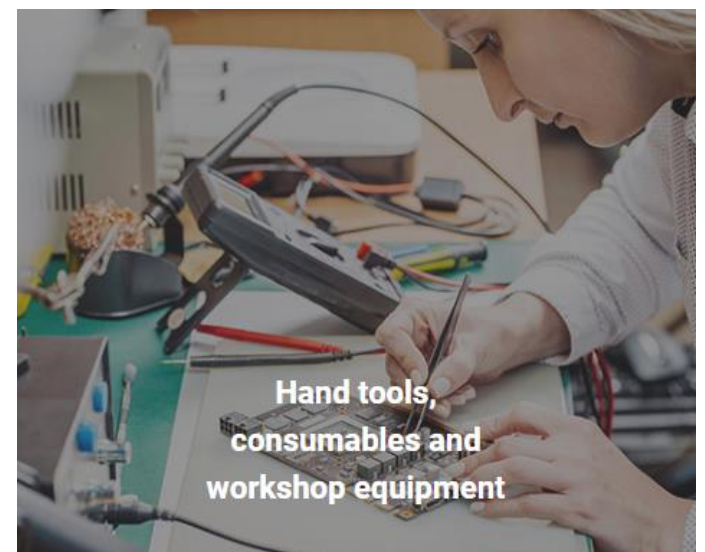
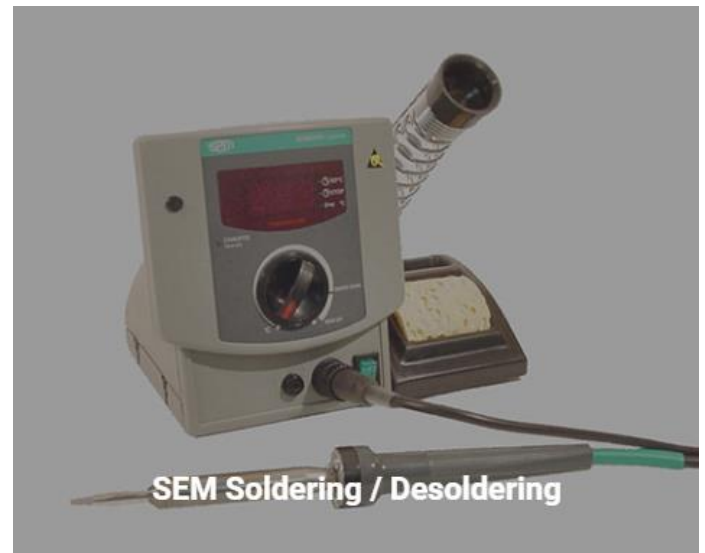
## Our Company

Our know-how has been with you for more than 100 years.

We serve more than a thousand companies every year in all sectors and allow them to have work tools adapted to their activity.

We offer standard solutions or design tailor-made projects adapted to the environments and issues of our customers.

Our area of expertise covers 4 main categories of products:



## Our Offer



**French made**  
Our products are manufactured in our Nanterre workshops.  
We also rely on a network of national suppliers and subcontractors.



**Sustainable products**  
Reliable products that we master the maintenance and repair for a reduced environmental footprint.



**Customized solutions**  
A specific project, we propose an ad hoc solution.



**Showroom**  
Presentation of our products and realization of tests on samples.



**Online quote**  
Click on the products that interest you, we send you a quote in the half day.



**Express delivery**  
A large stock of more than 1000 references allowing us to deliver under 48h for most of our products.



**Secure payment**  
Payment by Paypal, CB, Visa, MasterCard ...



**Payment facilities**  
Spread out your payments thanks to our leasing formulas with our partner BNP Paribas.



**Technical service at your disposal**  
Help with assembly, after-sales service, remote diagnosis.