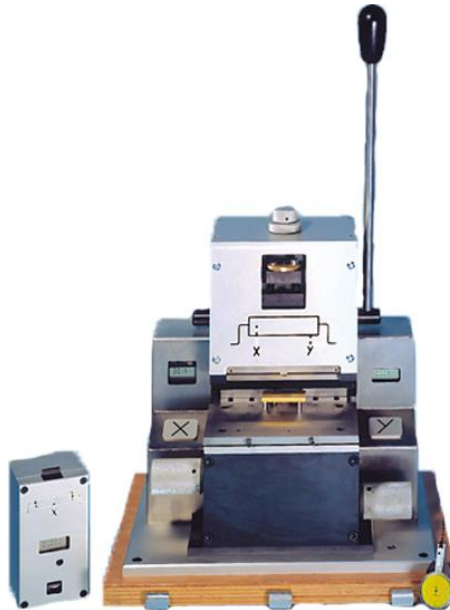


## MCCH150 - Cambering and cutting machine for hybrid components



Component forming machine MCCH 150, suitable for flat-pack and hybrid components. Simplicity in one, cambering and cutting any type of component whatever its legs are placed on the side or on front.

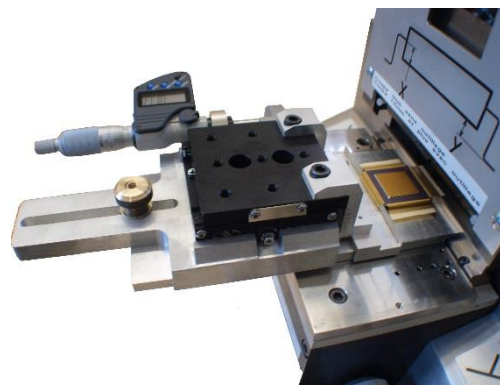
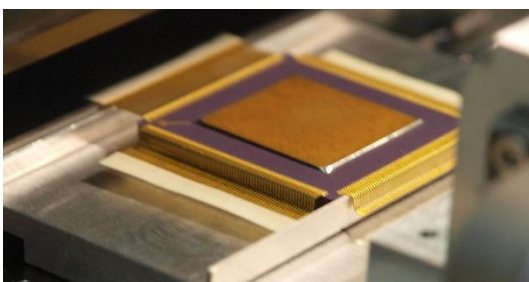
- Precision within 3/100 mm
- Entirely autonomous machine
- Display of parameters

This unit allows the transformation of traditional components for the integration on SMT boardcards as well as all the hybrid cases including fine-pitch components. It doesn't need to be changed each time you change your process line.

Thanks to its possibilities of adjustment, the MCCH150 allows to ensure parallelism and stability of the components on PCB.

Benefits :

- ✓ No risk of crack at glass shots level at the exit of the hybrid components leg
- ✓ No tools dedicated to a type of component thus no need to buy expensive new tools if new components are integrated
- ✓ No handling between forming and cutting, both operations are done in the same time inducing less risk of deterioration of the component



Ref. PMT160