

Miniwaves

These selective Miniwaves are made of titanium, to reach very high temperatures and allow the welding and desoldering of components with precision and cleanliness.

- ✓ Compact
- ✓ Numerous applications: lead-free soldering, repair work, production lines
- ✓ Safe: setting the bath temperature with a digital display (on some models), the power and height of the wave, the immersion time in the wave
- ✓ Possible addition of additional accessories: constant level fluxing, inerting hood ...

An alloy is introduced into the tank, to melt, exit through the nozzle and form an extremely smooth wave. This process allows the soldering or desoldering of components without affecting or damaging neighboring components and allows for a permanent tin surface without any impurities. Miniwaves are also production machines for brazing complex components requiring adapted multi-jet nozzles.

All our products are compatible with lead-free alloys.

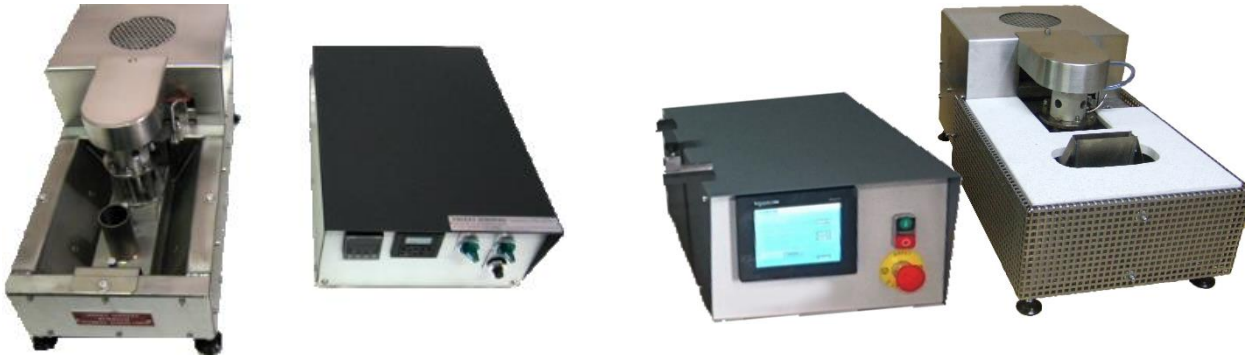
Selective miniwave MV100 and MV100-GD5



Technical data	
Mains supply	230 V – 50/60 Hz
Dimensions L x l x H	370 x 240 x 280 mm
Power	1 350 W
Alloy capacity	12 kg
Maximum size suitable nozzle (*)	125 x 20 mm
Maximum dimensions of PCB	160 x 500 mm
Maximum temperature	300°C for MV100 500°C for MV100-GD5
Warm-up time	45 min

(*) The dimensions may be different. For example, if we reduce the length of the nozzle, it is possible to increase the width, it is simply to best respect the surface of the nozzle

Selective miniwave MV400 standard control box / MV400-HG with touch screen control box

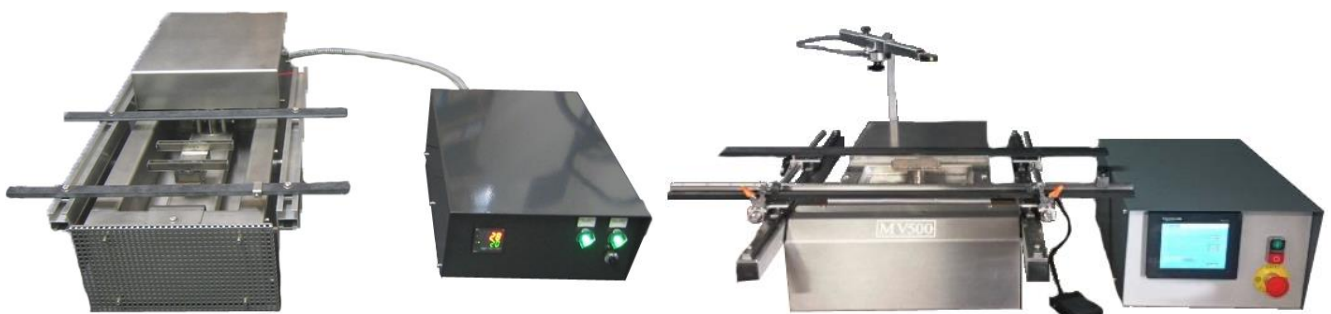


MV400 standard control box

MV400 touch screen control box

Technical data	
Mains supply	230 V – 50/60 Hz
Dimensions L x l x H	570 x 250 x 200 mm
Power	1 800 W
Alloy capacity	20 kg
Maximum size suitable nozzle (*)	125 x 30 mm
Maximum dimensions of PCB	160 x 500 mm
Maximum temperature	500°C
Warm-up time	1 hour

Selective miniwave MV500 standard control box / MV500-HG with touch screen control box

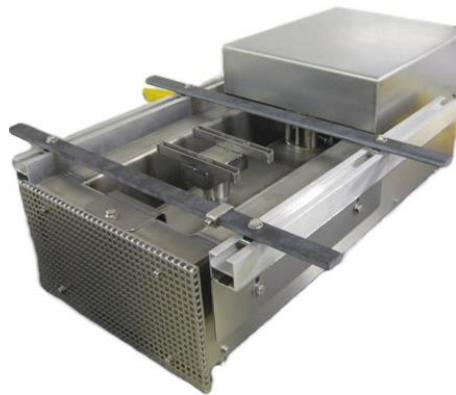


MV500 standard control box

MV500 touch screen control box

Technical data	
Mains supply	230 V – 50/60 Hz
Dimensions L x l x H	700 x 300 x 170 mm
Power	2 700 W
Alloy capacity	45 kg
Maximum size suitable nozzle (*)	200 x 20 mm
Maximum dimensions of PCB	500 x 600 mm
Maximum temperature	300°C
Warm-up time	1 hour

Selective miniwave MV550



Technical data	
Mains supply	230 V – 50/60 Hz
Dimensions L x l x H	750 x 260 x 290 mm
Power	3 000 W
Alloy capacity	55 kg
Maximum size suitable nozzle (*)	250 x 30 mm
Maximum dimensions of PCB	300 x 500 mm
Maximum temperature	400°C
Warm-up time	1 hour

Options for miniwaves

Options	MV100	MV400	MV500	MV550
Pre-heating clock	√	√	√	√
Laser pointer for MV500			√	
Arm rest	√	√	√	√
Up and down pneumatic system with fine tuning	√	√	√	√
X-Y table System			√	
PCB support (adjustable)	√	√	√	√
Cycle launch pedal	√	√	√	√
Nitrogen cover with 1 pressure reducer gauge, 1 flow meter, 1 titanium cover equipped with a diffuser (stainless steel porous)	√	√	√	√
Maintenance	No particular maintenance needed			